

Basic Troubleshooting

*LED not displayed

Check the power source is correct voltage and correct polarity.

*Display appears scrambled

Check that all connections are correct and tight.
Check that there is no harsh interference nearby.

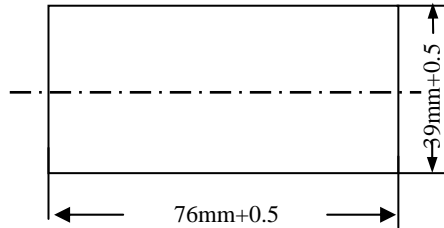
*Display 1 or -1

Please confirm signal input is a loop when it is voltmeter;
Please confirm inputting signal is not more than its measuring range.

*A/D chip maybe murdered

Reading data isn't Zero when shorting voltmeter signal inputting terminals.
Reading data isn't Zero when ammeter signal inputting is off.

Panel Cutout:



XL5135V (DC2/AC)Series Digital Panel Meter With Isolation DC Power Module supply

MANUAL

XIELI

ISO9001-2008 & CE

Shaanxi XIELI Photo Electric Instrument Co., Ltd

Add: No.2 Xinke Rd, Eastern Development Zone,

Xi'an 710043, Shaanxi, CHINA

Tel: +86-29-82622375 Fax: +86-29-84023638

Website: www.xieli-china.com

XL5135V (DC2/AC)Series Digital Panel Meter

With 12VDC,24VDC, 9-18VDC,18-36VDC Isolation power module

OPERATION SPECIFICATIONS:

Maximum Count	1999(3 1/2 digit)
Display	Ultra-bright LED display
Color	Red, Blue, Green displays available
Character Height	15mm
Operating temperature	0°C ~60°C
Storage Temperature	-20°C ~80°C
Relative humidity	20%~80%
Dimension	W79mm x H42.5mm x D55mm
Panel Cutout	76mm×39mm
Weight	125~135g
Sample Frequency	400ms
Auto Zero	
Auto Polarity	
Data Holding	
Over Range	Display 1 or -1

Can be re-calibrated by adjusting the calibration potentiometer
 Easy to install, snap-in/mount in panel
 Ideal for auto, boat, industrial, commercial & domestic uses
 Decimal Point position can be selected by user

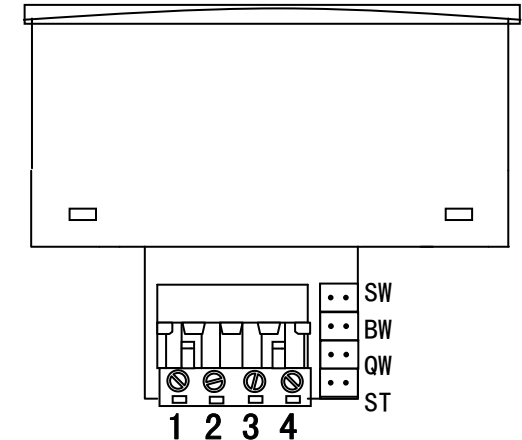
XL5135V (DC2/DC)Series Digital Panel Meter

Model No.	Range	Resolution	Max. Input	Accuracy
DC Voltmeter				
XL5135V-1(DC2/DC)	±199.9mV	100μV	±10V	±1%+3
XL5135V-2(DC2/DC)	±1.999V	1mV	±35V	±1%+3
XL5135V-3(DC2/DC)	±19.99V	10mV	±250V	±1%+3
XL5135V-4(DC2/DC)	±199.9V	100mV	±400V	±1%+3
XL5135V-5(DC2/DC)	±300V	1V	±500V	±1%+3
DC Ammeter				
XL5135A-1(DC2/DC)	±199.9μA	100nA	±15mA	±1%+3
XL5135A-2(DC2/DC)	±1.999mA	1μA	±50mA	±1%+3
XL5135A-3(DC2/DC)	±19.99mA	10μA	±150mA	±1%+3
XL5135A-4(DC2/DC)	±199.9mA	100μA	±500mA	±1%+3
XL5135A-5(DC2/DC)	±1.999A	1mA	±3A	±1%+3
XL5135A-6(DC2/DC)	±5.00A	10mA	±6A	±1%+3

XL5135V (DC2/AC)Series Digital Panel Meter

Model No.	Range	Resolution	Max. Input	Accuracy
AC Voltmeter				
XL5135V-1(DC2/AC)	AC199.9mV	100μV	AC10V	±1%+3
XL5135V-2(DC2/AC)	AC1.999V	1mV	AC35V	±1%+3
XL5135V-3(DC2/AC)	AC19.99V	10mV	AC150V	±1%+3
XL5135V-4(DC2/AC)	AC199.9V	100mV	AC400V	±1%+3
XL5135V-5(DC2/AC)	AC300V	1V	AC500V	±1%+3
AC Ammeter				
XL5135A-1(DC2/AC)	AC199.9μA	100nA	AC15mA	±1%+3
XL5135A-2(DC2/AC)	AC1.999mA	1μA	AC50mA	±1%+3
XL5135A-3(DC2/AC)	AC19.99mA	10μA	AC150mA	±1%+3
XL5135A-4(DC2/AC)	AC199.9mA	100μA	AC500mA	±1%+3
XL5135A-5(DC2/AC)	AC1.999A	1mA	AC3A	±1%+3
XL5135A-6(DC2/AC)	AC5.00A	10mA	AC6A	±1%+3

WIRING DIAGRAM:



Terminal 1: + Power Positive
 Terminal 2: - Power Negative
 Terminal 3, 4: Signal input

Decimal point Adjustment

SW shorted by jumper, display 199.9

BW shorted by jumper, display 19.99

QW shorted by jumper, display 1.999

The DATA will be holding when ST shorted by jumper